



TYPAVE 25

STE-JULIE, QC GRASS AND GROUND REINFORCEMENT

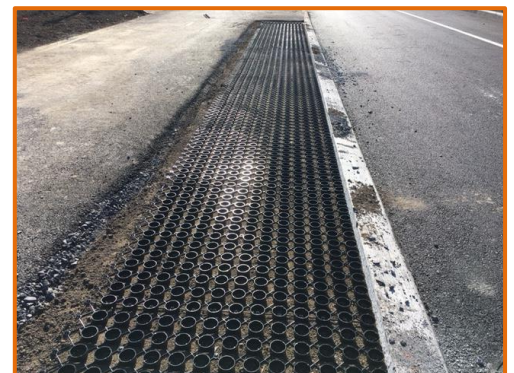
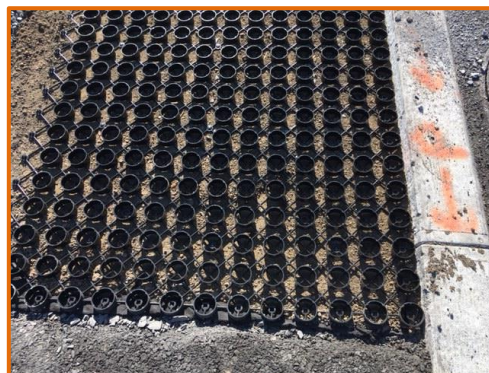
In certain areas of the municipality the cyclist paths run parallel to residential roads. For safety purposes and to protect and beautify the environment it was decided to place a strip of grass between the cyclists and automobiles.

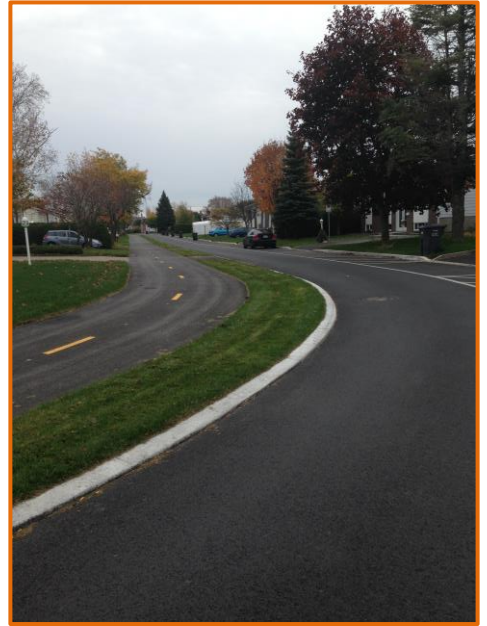
In order to reinforce the grass, the municipality opted for TYPAVE 25.

TYPAVE 25 is a porous paver made from recycled plastic material to meet LEED credits. The plastic paver is engineered to provide a reinforced surface for H25 load.

Features & Benefits

- Grass or gravel surface reinforcement
- Quick-Snap technology with hands free connections
- 6,560 psi load support
- Up to 2X more connections
- Made from recycled material (environmentally friendly)
- Anchoring capability





TYPAR guarantees the performance of their products.

All TYPAR grass and ground reinforcement products are suitable for use as a source control solutions in LID and NPDES applications.

For more information please visit our [website](http://www.dbbinc.ca).