

## LONG TERM CONTROL OF VEGETATION GROWTH

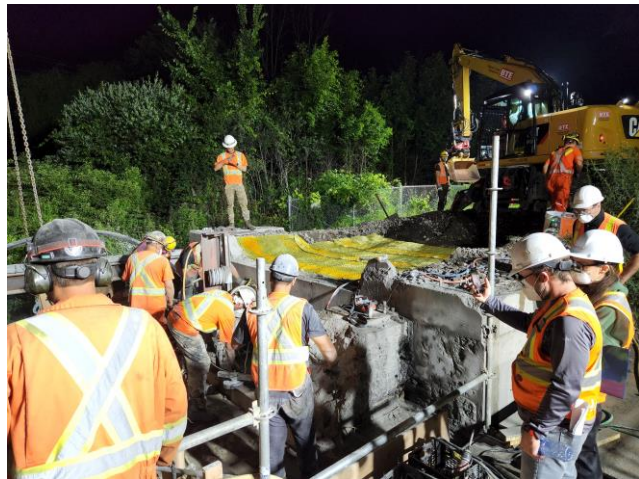
VIA Rail gave a mandate to SEMA Railway Structure to identify a product which would control the growth of vegetation on the approach of railroad bridges. The objective of this study was to prevent vegetation growth, vegetation fires and to provide ease of maintenance and better visibility in case of emergencies.

Typar Biobarrier, manufactured by Berry Global and is guaranteed for 15 years. This product is unique worldwide.

Vegetation along tracks



Setting in place the Biobarrier membrane



Project complete

