

METAL GRILLS

Metal grills protecting trees are becoming more popular in our municipalities, but there is a concern.....WEEDS!.....they just keep growing through the metal grills!

Municipalities have tried numerous corrective procedures including installing a heavy geotextile covered with mulch. But to no avail, the weeds just kept growing.



Following a study by the municipality of Sainte-Agathe-des-Monts, they decided to use **Biobarrier** to control the weeds.

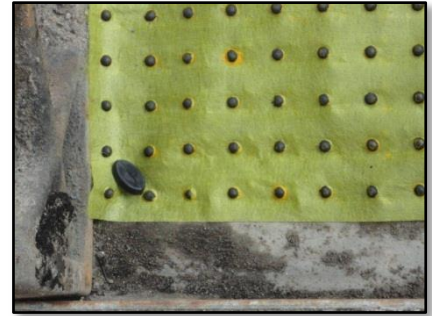
Unsightly weeds



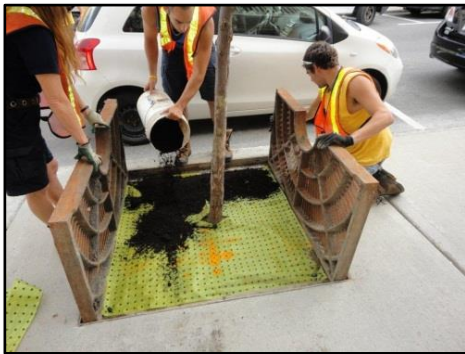
Removal of the metal grill



Cutting, placing and securing the Biobarrier membrane in place (plastic pegs are included with every roll of Biobarrier)



3" of compost was used to cover the Biobarrier membrane.
Mulch, stones and soil can be used, but never more than 3".



Repositioning the metal grill.

Completed project.



Biobarrier's performance is guaranteed by the manufacturer for 15 years, but you can expect it to last for 25 and even 30 years!