

Hydro Quebec owns many electric installations (e.g. transformer sub-stations) where all vegetation (trees, shrubs, herbaceous plants) must be eliminated. For reasons of safety, it is mandatory that these installations be surrounded by a fence. Any intervention (e.g. application of herbicide on plants foliage, shrub removal, etc...) inside this enclosure implies that the equipment has to be shutdown. Shutting down the equipment becomes problematic because of the strategic role occupied by this equipment (e.g. export of electricity).

Over the past few years, Hydro-Québec has used Biobarrier on numerous projects. Recently, they opted to use Biobarrier on two projects in the Schefferville area.

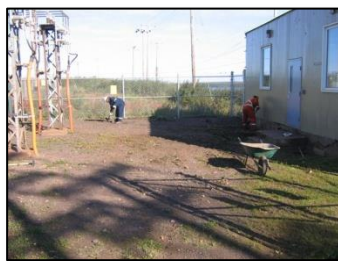
STATION 1 = 330 M<sup>2</sup> (3,552 Ft<sup>2</sup>)

STATION 2 = 1,530 M<sup>2</sup> (16,469 Ft<sup>2</sup>)

*Biobarrier rolls come in a heavy duty yellow plastic bag in a cardboard box.*



*Site is prepared by levelling the land and removing the existing vegetation.*



*Positioning of the Biobarrier membrane around units, along the fence and inside the enclosure.  
It is then covered with crushed stone to a thickness of 3".*



*The crushed stone is leveled and covers the entire area where Biobarrier was installed.*



**Biobarrier's performance is guaranteed for 15 years, but you can expect it to last for 25 and even 30 years!**